

# Hb N-Timone

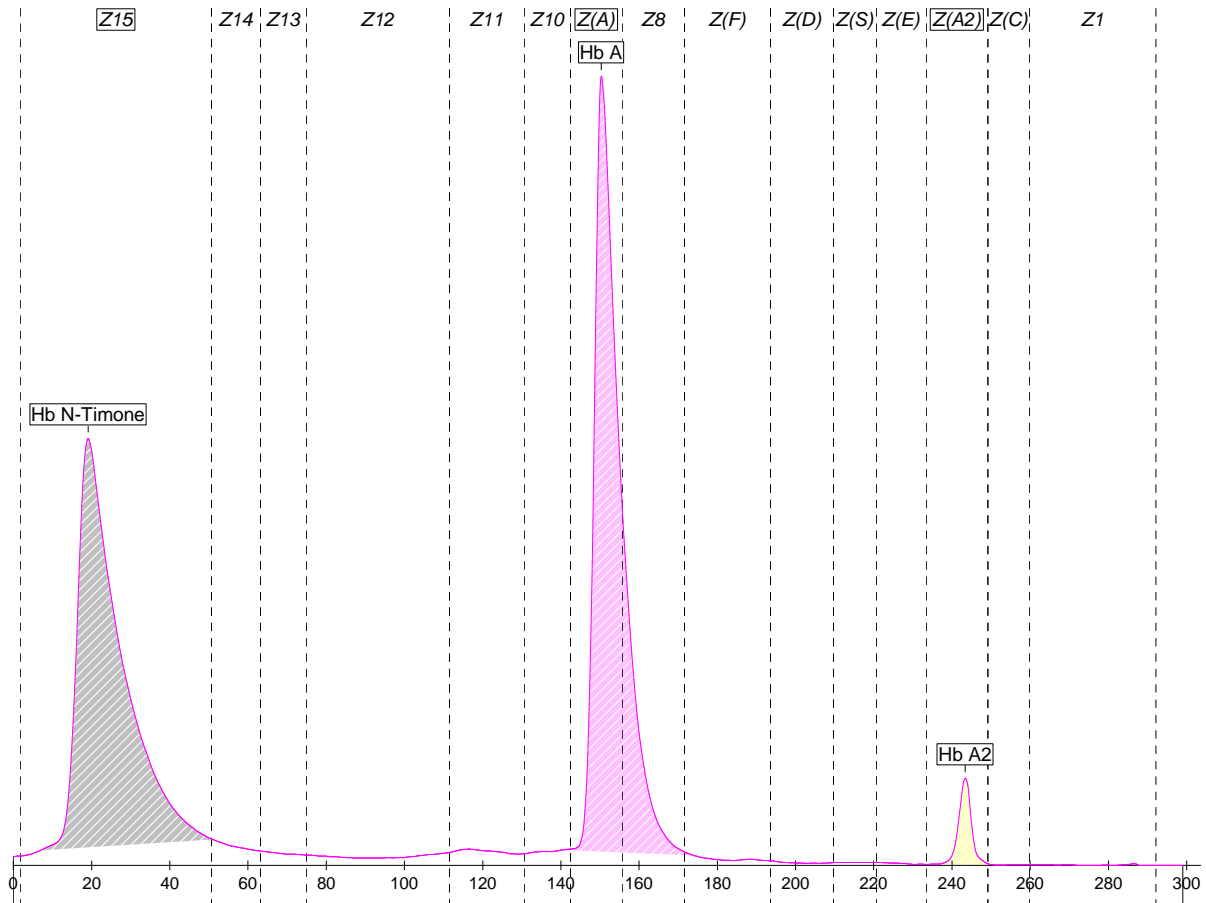
Globin chain(s) involved: **Beta**

Status: **Heterozygous**

Migration in zone(s): **Z15**

Migration in position(s): **19**

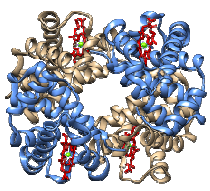
*Peak position may vary +/- 1*



## Capillary Electrophoresis

Fractions	Value %
Hb N-Timone	<b>45,1</b>
Hb A	<b>52,1</b>
Hb A2	<b>2,8</b>

Comments on this profile: -



# Hb N-Timone

## Mutation data

Status:	Heterozygous
<b>Hb N-Timone</b>	
Mutation	Beta 8(A5) Lys>Glu
Nomenclature	HBB:c.25A>G
In combination with:	
Mutation	
Nomenclature	

Comments: -

## Hematology

Hematological parameters	Results
RBC	
Hemoglobin	
Hematocrit	
MCV	

Hematological parameters	Results
MCH	
Blood smear	
Serum iron and ferritin	

<b>Comments on hematology:</b>	Normal
--------------------------------	--------

## Other information

<b>Clinical context:</b>	
Clinical presentation	Normal
Genetic risk	No data
Advice	No data
<b>About this variant:</b>	
Stability	Normal
Oxygen affinity	Normal
Found in	Discovered in a French-Italian family

Comments:

**References:** Léna-Russo D. et al., Hemoglobin. 1989;13(7-8):743-7.